

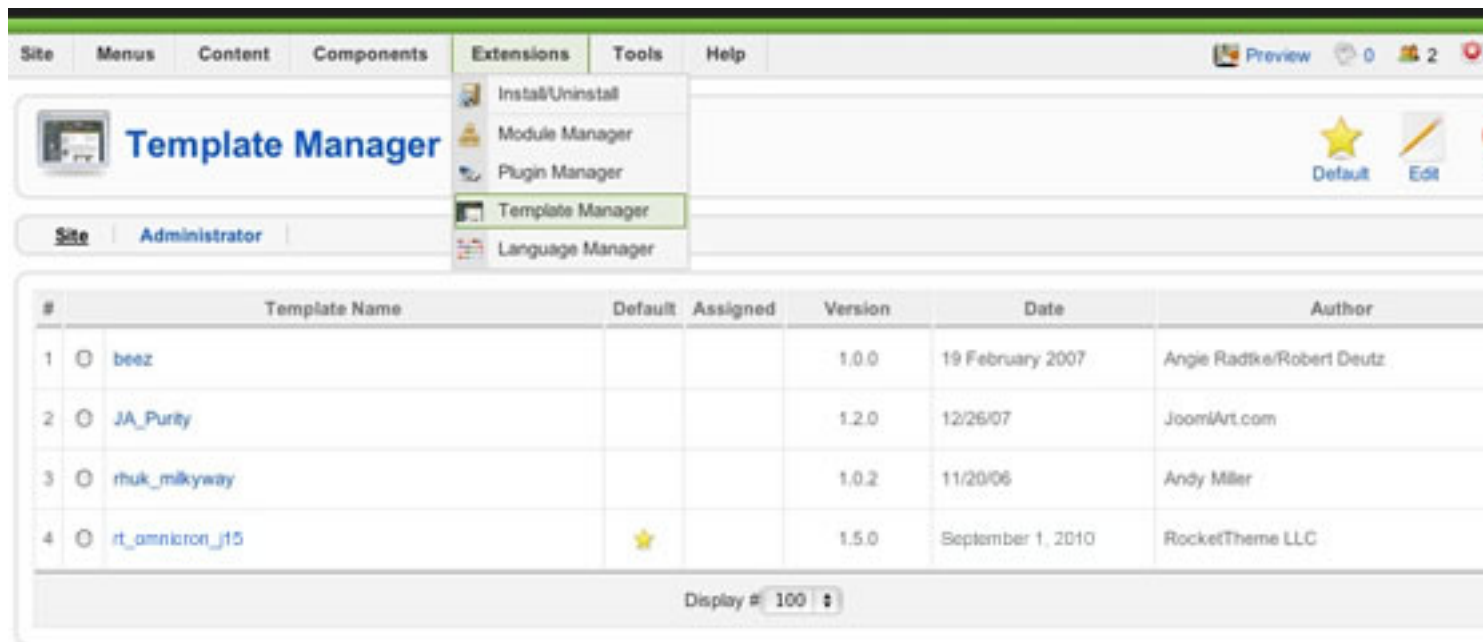
Style Control

Written by Administrator

Monday, 23 August 2010 16:31 - Last Updated Monday, 30 August 2010 18:36

Preview all available styles and any associated combination at the [Preset Styles](#) page. **Access Style Control**

Access the Style Control settings from **Admin** ▯ **Extensions** ▯ **Template Manager** ▯ **rt_omnicron_j15** ▯ **Settings**



Configuration

The options are as follows, and the areas that they control are indicative in their name:

- **Style Presets:** Preset 1 to Preset 9
- **Static CSS:** On - Off
- **Body Level:** High or Low
- **CSS Style:** Style 1 - 9
- **Read More Style:** Button or Link
- **Article Style:** Default, Title1-6
- **Article Info Style:** Layout1-3
- **Fixed Footer:** On - Off
- **Web Fonts:** On - Off; Google Font Directory
- **Font Settings:**
- **Font Family:** Enigmatic, Geneva, Optima, Helvetica, Trebuchet, Lucida, Georgia, Palatino, or **Various Google Fonts (dropdown)**

Style Control

Written by Administrator

Monday, 23 August 2010 16:31 - Last Updated Monday, 30 August 2010 18:36

- **Font Size:** Default, Extra Large, Large, Small, Extra Small (*dropdown*)

Note: **Gantry** allows you to configure *all* parameters, on a **per menu item** basis. For example, you can assign preset2 to one page and preset4 to another.

Creating your own Preset Styles

- Go to **Extensions** ▢ **Template Manager** ▢ **rt_omnicron_j15** ▢ **Settings**
- Configure the Settings
- Click **Save Custom Presets as New**
- Follow the **Preset Saver** procedure

You can edit the prebuilt presets in the **gantry.config.php** file.

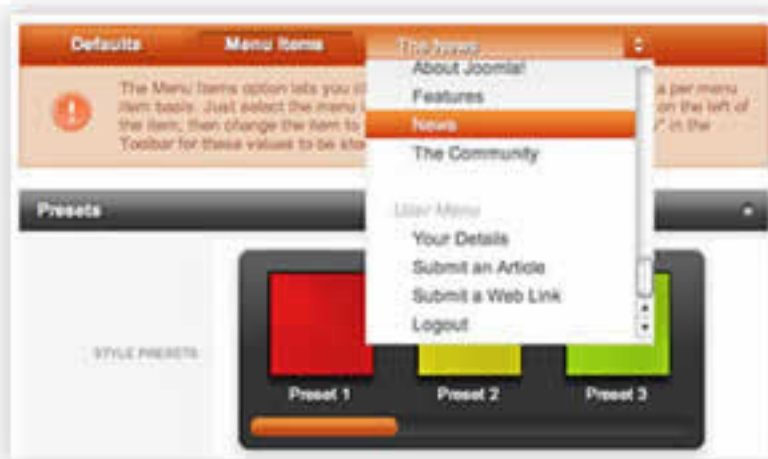


Assigning a Style to a Specific Page

Style Control

Written by Administrator

Monday, 23 August 2010 16:31 - Last Updated Monday, 30 August 2010 18:36



With Joomla! 1.5, it's easier than ever to create individual user profiles and preferences sets, parameter areas, or
[Gantry Framework: Per Menu Item Configuration](#)